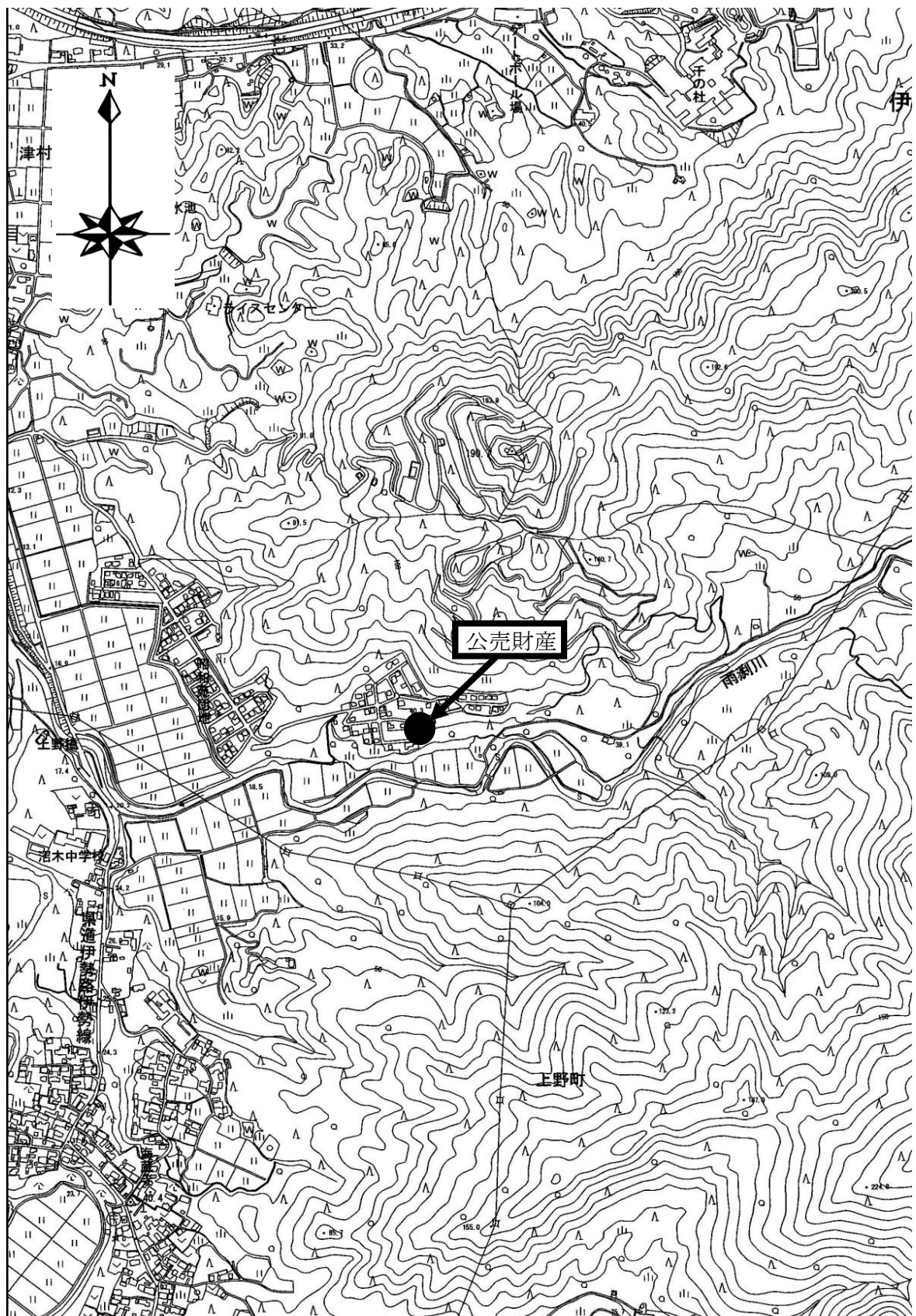
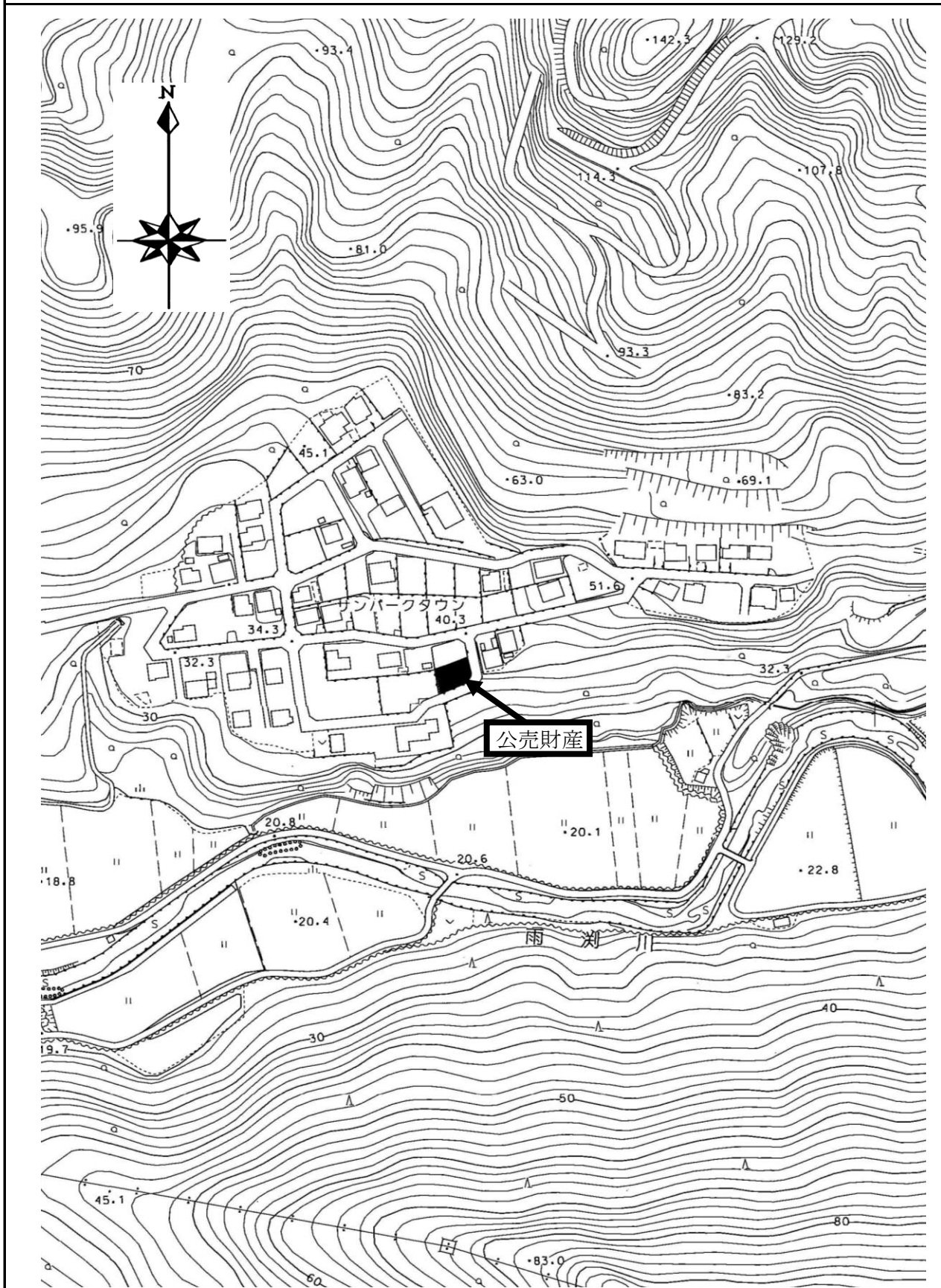


所在図



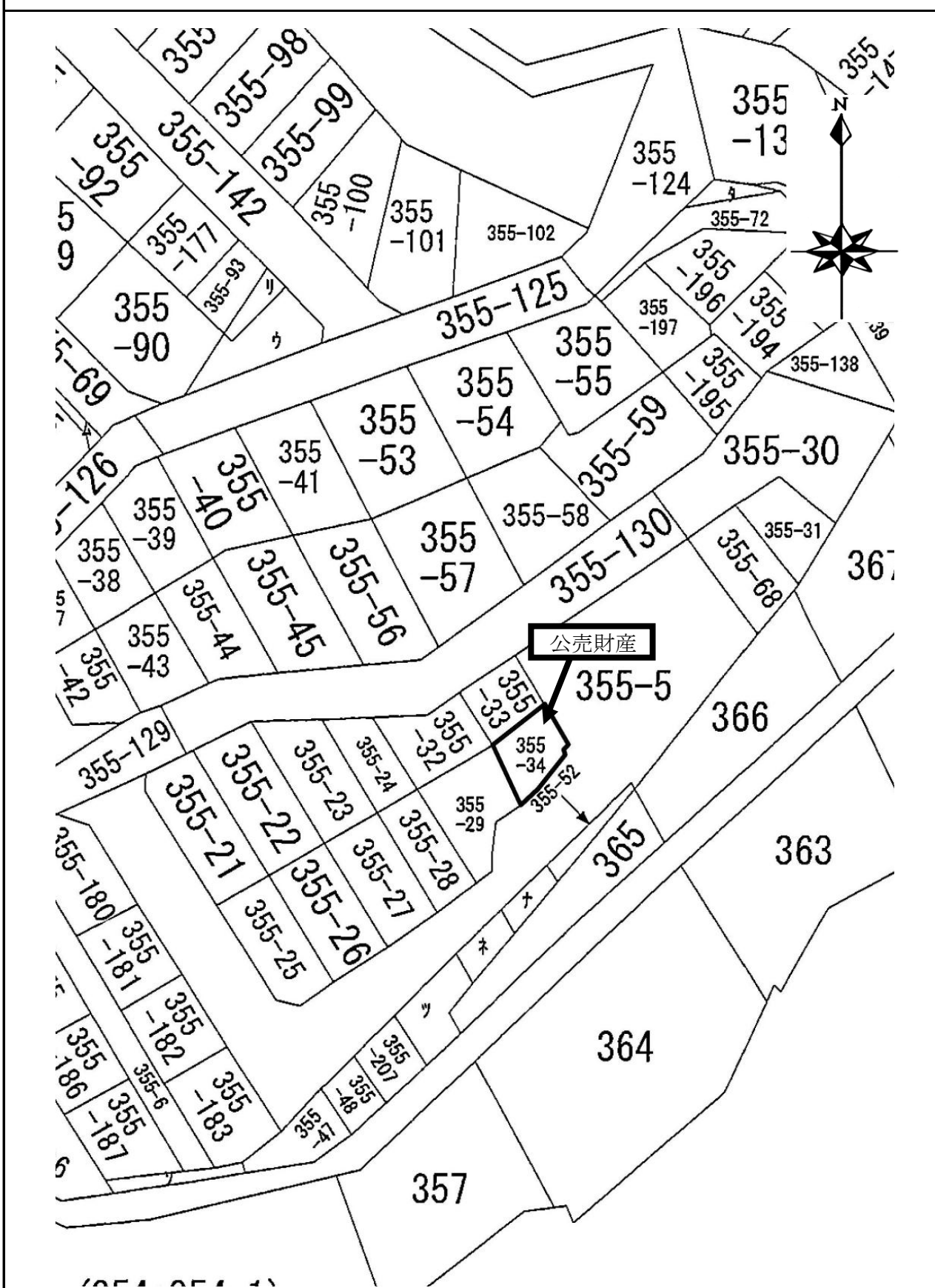
売却区分番号 NF7-67

所在図



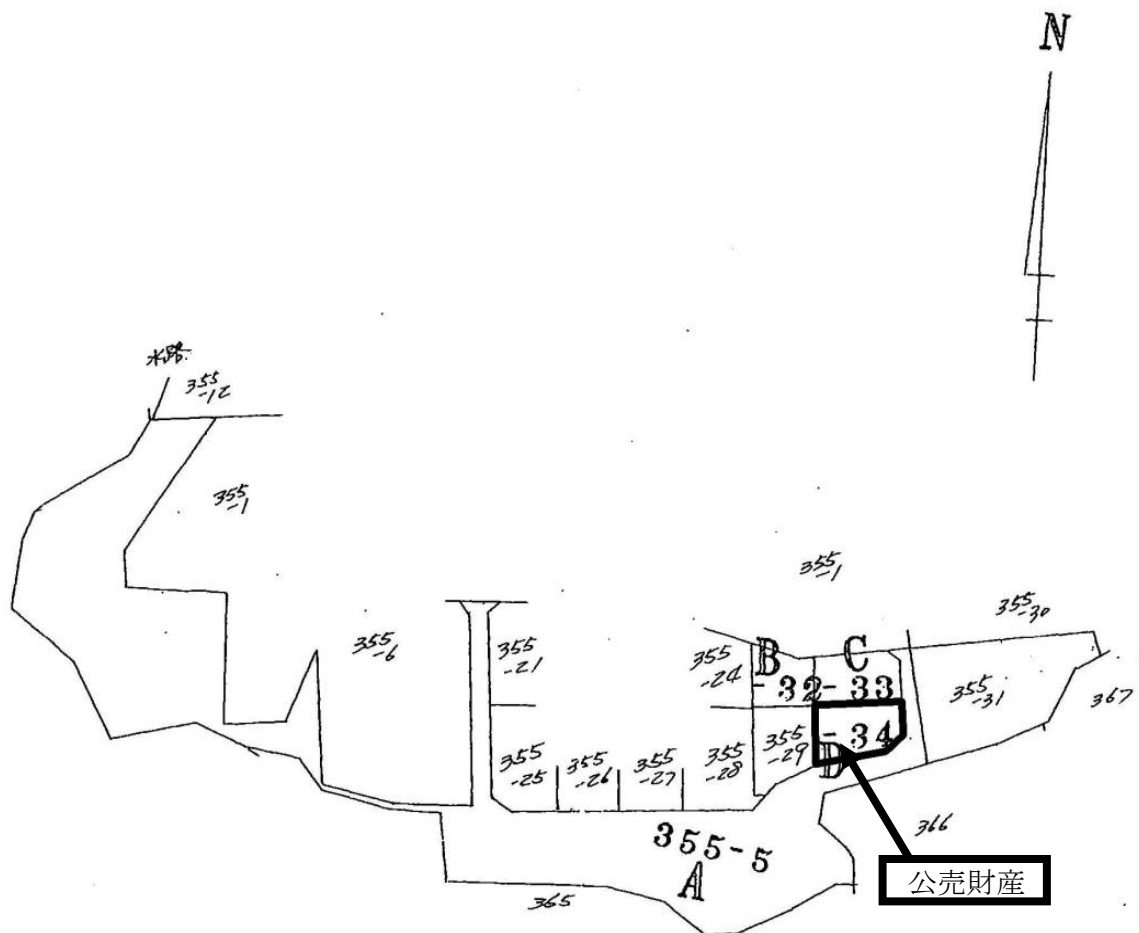
売却区分番号 NF7-67

所在図

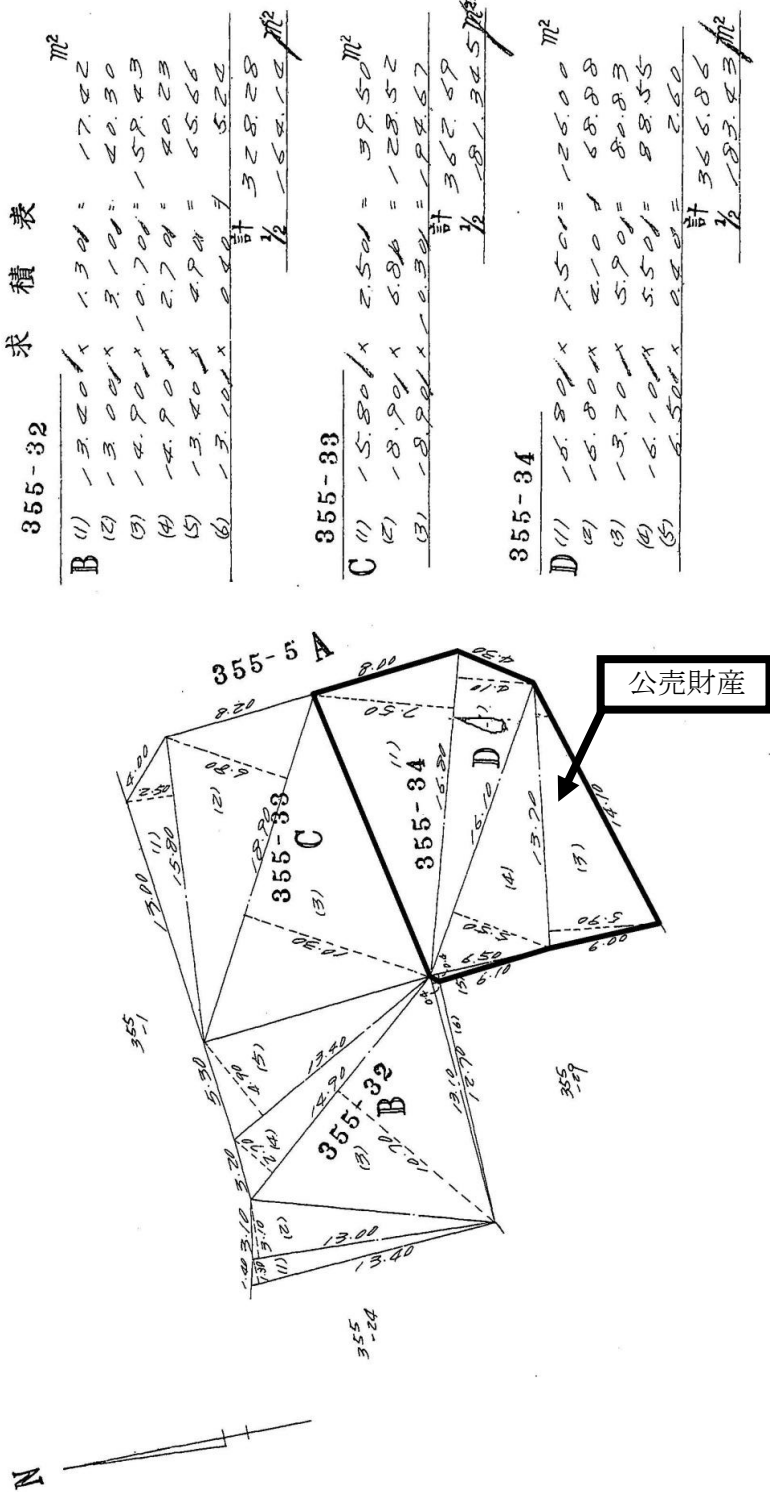


売却区分番号 NF7-67

所 在 図



所在図



求積表

355-32		
B	(1) 13.00 x 1.30 =	17.02 m ²
	(2) 13.00 x 3.10 =	40.30
	(3) 14.90 x 0.70 =	10.43
	(4) 14.90 x 2.70 =	40.23
	(5) 13.40 x 4.90 =	65.66
	(6) 13.10 x 0.00 =	0.00
計		328.28
		1/2 164.14

355-33		
C	(1) 15.80 x 2.50 =	39.50 m ²
	(2) 18.90 x 6.80 =	128.52
	(3) 18.90 x 0.30 =	5.67
計		362.59
		1/2 181.295

355-34		
D	(1) 16.80 x 7.50 =	126.00 m ²
	(2) 16.80 x 4.10 =	68.88
	(3) 13.70 x 5.90 =	80.83
	(4) 16.10 x 5.50 =	88.55
	(5) 6.50 x 0.40 =	2.60
計		366.86
		1/2 183.43

残地計算

$$3749.5950 - (164.1400 + 181.3450 + 183.4300) = 3220.6800 \text{ m}^2$$

B m^2
 C m^2
 D m^2
 A